

---

# PCB LASER MARKING MACHINE

## LCD Serie

PCB Laser Marking Machine from HGLASER is designed for bar codes marking, 2D codes and characters, graphics and other information on any kinds of printed circuit board. Integrated with high-performance CO2 / Fiber laser source, import high-pixel CCD camera and micron-level mobile module, PCB Laser Marking Series is competent to pre-marking automatic positioning and post-marking feedback reporting.

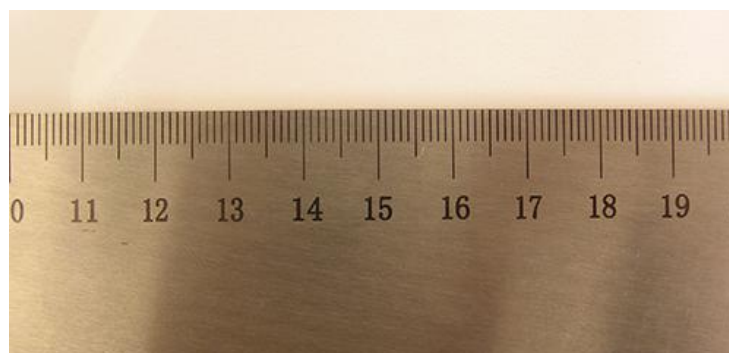


### Fast Marking Speed

Professional industrial laser, fast marking speed, operated in 24 hours continuously, suitable for high-speed continuous production line

### High Precision Marking

High-precision galvanometer scanning system, uniform light spot, precision marking, 100% positive feedback.



### Low Energy Consumption

High electro-optic conversion efficiency, no consumables within 100,000 hours.

### Flexible Structure

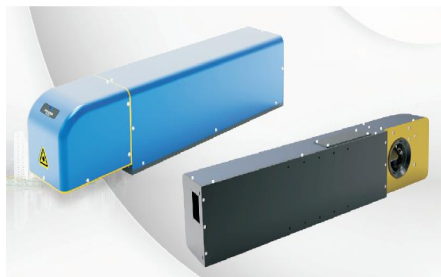
Friendly man-machine dialogue interface, easy operation and adjustment.

Main features of PCB laser marking machine:

1. High-quality laser beam, small focusing spots and well-distributed power.
2. High-pixel CCD camera makes automatic positioning, identification and feedback reporting come true.
3. Gantry structure and synchronous transmission guide ways ensure the stable & precision performance.
4. Automatic focusing and track width adjusting are designed to match up different production lines.
5. Integrated with SMT online operation and automatic off-board station.
6. Independent research on specialized software for PCB marking, with function of preventing and repairing, reducing the rate of product irregularity.
7. Connected with MES system for data communication



20/30/50W fiber



Import components dynamic focusing system



Cabinets and affiliated

Widely and perfectly suitable for Computer, Consumer Electronic Industry, Cell key-press, Precision instrument, and 3C electronic industry, etc.

